

Feb. 21, 2012  
Tripod Camera Club  
Photoshop Basic Training

# RAW vs. JPEG

Which file type is right for me?

# Tough questions...



Which camera? (Canon or Nikon or other?)

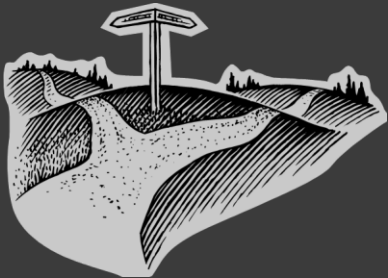
Which lenses? (Prime or zoom?)

Which settings? (Aperture, Shutter, ISO, WB)

Which computer? (Mac or PC or Linux?)

Which software? (Photoshop, Lightroom, Gimp?)

RAW or JPEG? (maybe both?)



# Tough questions...



Which camera? (Canon or Nikon or other?)

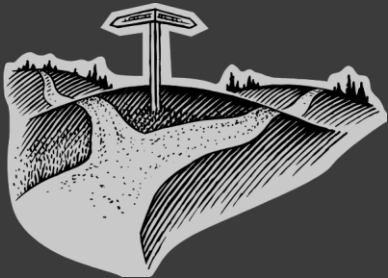
Which lenses? (Prime or zoom?)

Which settings? (Aperture, Shutter, ISO, WB)

Which computer? (Mac or PC or Linux?)

Which software? (Photoshop, Lightroom, Gimp?)

**RAW or JPEG?** (maybe both?)



# Chicken or the egg?

Which came first, the chicken or the egg?



# Eggsplain please!

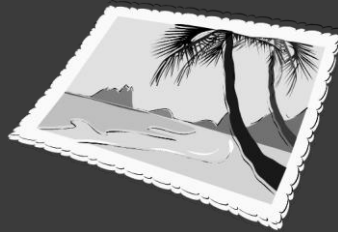
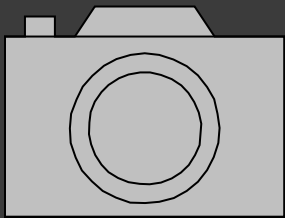
Chicken = Camera

Eggs = Photos

Raw egg = RAW file

Cooked egg = JPEG file

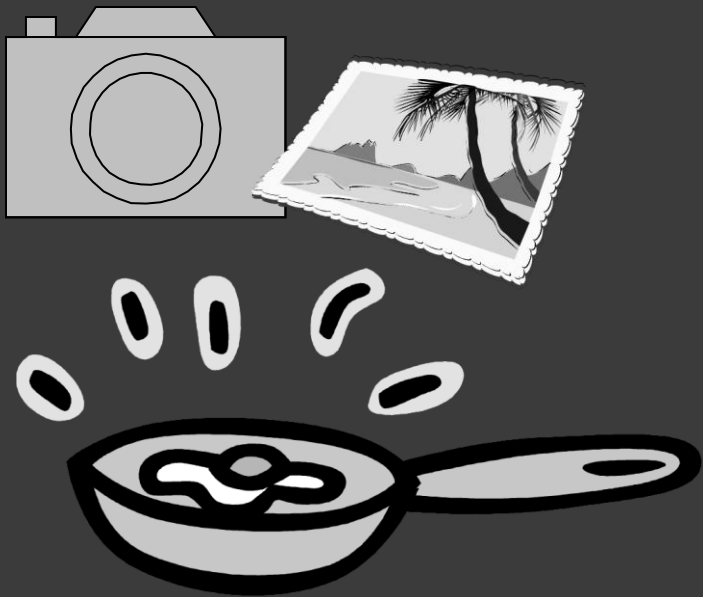
Farmer's wife = Camera's software



# Over Easy or Do It Yourself?

RAW = Do it yourself

JPEG = Over Easy



# Control vs. Simplicity

## RAW (DSLRs, advanced P&S)

- Unprocessed (lossless)
- Large file size
- Change camera settings after the shot (Color, Exposure)
- Requires Digital “Processing” (conversion takes time)
- Need special software to view
- Different files for different cameras (Adobe .dng)
- 12 or 16-bit (Convert to 8-bit)
- Data never overwritten (sidecar with saved adjustments)

.arw, .crw, .cr2, .nef, .nrw,  
.arw, .raw, .rw2, etc.

## JPEG (Point & Shoot basic models)

- Compressed (In-camera conversion)
- Smaller file size (adjustable)
- Maximum compatibility
- Faster write speed (some models)
- 8-bit
- Data loss (noise) with each save

## TIFF (rarely used)

- Uncompressed (lossless)
- Very large file size
- 8 or 16-bit
- Can be re-saved safely
- Like Photoshop files (.psd)

.jpg or .tif